



**"ACHIEVING QUALITY,
EQUITY AND ACCESS TO
COMPREHENSIVE HEALTH AND
SOCIAL SERVICE SYSTEMS"**

PLANNING & REBUILDING HEALTHCARE POST-KATRINA



**THE PARTNERSHIP FOR ACCESS TO
HEALTHCARE (PATH) - WORKING
TOGETHER TO RECOVER, STRENGTHEN
AND EXPAND MEDICAL HOMES FOR
THE PEOPLE OF NEW ORLEANS**

Introduction

Founded in 1999, the Partnership for Access to Healthcare (PATH) is an organization of leaders in New Orleans' health and social service sectors who are dedicated to creating a culturally appropriate and seamless health and social services delivery system for residents of the New Orleans area. Following the principles of Crossing the Quality Chasm, the groundbreaking report from the Institute of Medicine that calls for fundamental change in American health care, this delivery system will be patient-centered, timely, safe, effective, efficient, and equitable. PATH's administrative home is the Louisiana Public Health Institute (LPHI). By bringing together groups with a common mission and pooling resources, PATH allows its partner organizations to harness the power of collaboration and achieve more together than any one entity could achieve alone.

PATH's purpose is to grow and strengthen the network of model medical homes for neighborhoods in the New Orleans area by:

- Building neighborhood-level primary care clinic capacity through data-driven planning and resource development;
- Developing robust information systems that include electronic medical records, in order to improve efficiency and quality of care and create an integrated network of healthcare providers that serve everyone, regardless of ability to pay;
- Formalizing referral processes and coordinating care across public and private providers; and
- Developing strategies to eliminate health disparities through the prevention and management of chronic conditions, such as diabetes and depression.

Hurricane Katrina severely damaged 13 neighborhood clinics and two hospitals that provided critical healthcare access points for the most vulnerable residents of the New Orleans region. However, shortly after the storm, leaders from PATH member organizations immediately began taking extraordinary measures to meet the health needs of the people they serve. Some examples of their leadership and initiative include:

Tulane University kept clinics open seven days a week, becoming the largest ambulatory care provider in Orleans Parish. In the absence of any formal healthcare infrastructure, faculty and other medical personnel provided care under awnings, in police precincts, in tents, and in parking lots. Through these efforts, they provided free care for about 400 patients per day, many of whom were uninsured or under-insured.

The Medical Center of Louisiana at New Orleans operated a limited emergency care clinic called "Spirit of Charity" at the Ernest N. Morial Convention Center. Spirit of Charity medical personnel used donated U.S. Air Force field mobile tents and portable buildings set up on the convention center floor to handle minor emergencies. The facility's personnel saw an increasing number of patients each month, with more than 4,500 visits in December, 2005.

EXCELth Family Health Center expanded its services to assist the disaster-affected population of Baton Rouge, where many of its clients are still displaced. A main office was established in the area and a mobile medical unit was deployed to East Baton Rouge FEMA trailer communities.

The Common Ground Collective set up a 24-hour First Aid Station in an Algiers mosque. Volunteer doctors, nurses, nurse practitioners, herbalists, body workers, counselors, pharmacists, acupuncturists, and physical therapists came from across the country to work with Common Ground as the First Aid Station developed into a free emergency-response healthcare clinic.

Thanks to tremendous efforts such as these, care is now being delivered through 24 currently operating sites as the PATH partnership moves ahead. Some recent accomplishments of the partnership include:

Creation of the Regional Ambulatory Care Planning Committee to coordinate planning and resource deployment in support of the development of community clinics post-Katrina. Since its creation, the committee (in partnership with the Louisiana Department of Health and Hospitals and the Metropolitan Human Services District) has secured \$13.5 million through the Social Services Block Grant program.

PATH Health Information Systems (PHIS), with funding from the Health Resources and Services Administration and the Louisiana Department of Health and Hospitals, is working to establish

electronic registration, billing and medical record systems in community health clinics throughout the New Orleans area. These systems operate using a common standard, so they may be linked in subsequent phases of PATH's development. Currently, nine such electronic systems have been implemented across six partner organizations.

PATH staff and partners have been instrumental in coordinating and contributing to efforts to establish principles for rebuilding the health system in the Greater New Orleans Region since Hurricane Katrina (e.g. Framework for a Healthier Greater New Orleans, Bring New Orleans Back Commission, and the Louisiana Health Care Redesign Collaborative).

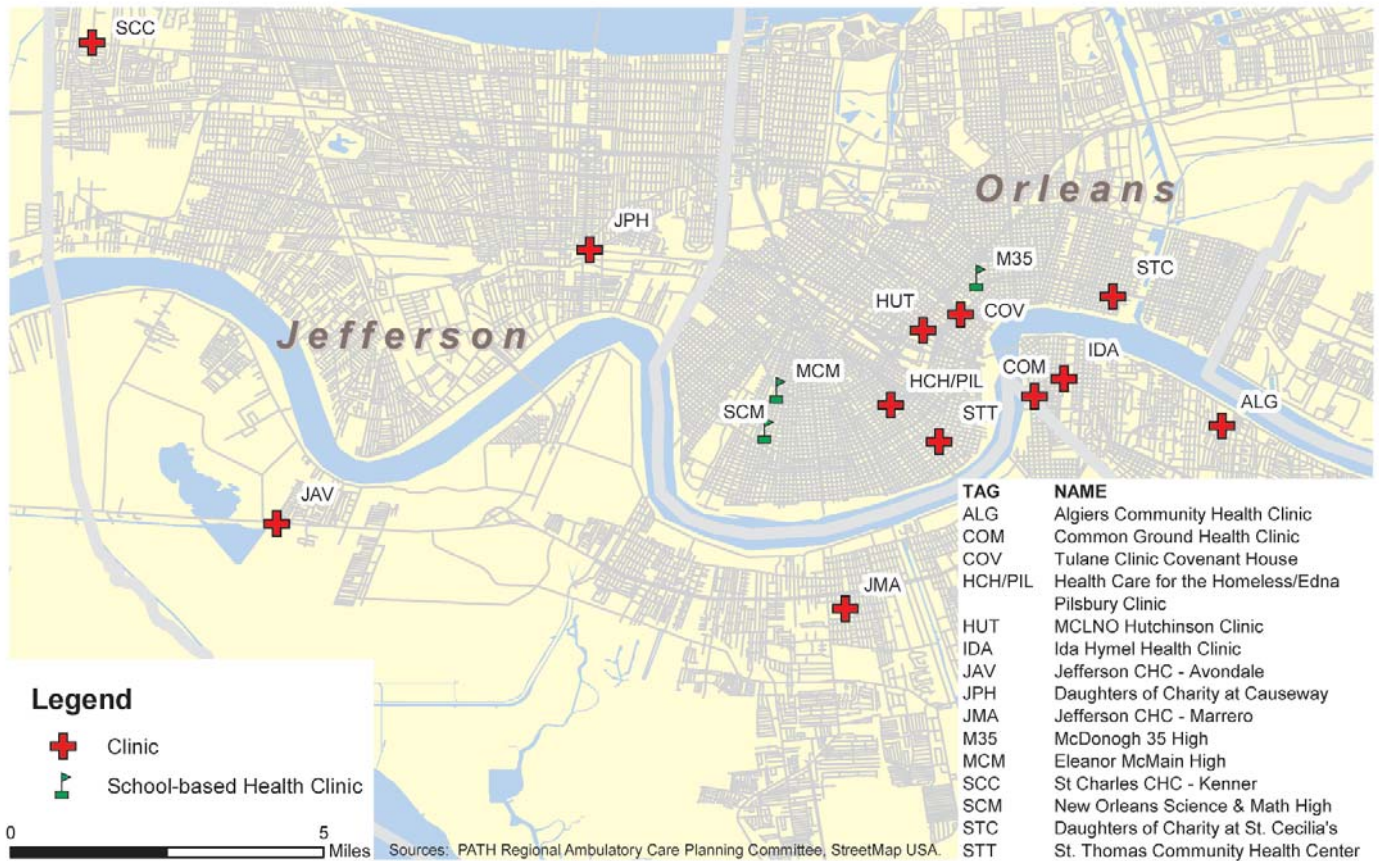


St. Thomas Community Health Center President and CEO Don Erwin describes the renovations made to the facility.



Right: EXCELth CEO Michael Andry speaks at the opening ceremony of the St. Cecilia Daughters of Charity Health Center as Governor Blanco and others look on.

PATH Community Health Care Facilities



Common Ground Health Clinic

1400 Teche St.
New Orleans, LA 70114
504-361-9800

Daughters of Charity Services of New Orleans

DCSNO at Causeway Clinic
111 N. Causeway Blvd
Metairie, LA 70001
504-482-0084

Daughters of Charity Services of New Orleans/ EXCELth, Inc.

St. Cecilia Clinic
4201 N. Rampart St.
New Orleans, LA 70117
504-945-1531, ext. 2

New Orleans Health Department/ EXCELth Inc.

Ida Hymel Health Clinic
1111 Newton St.
New Orleans, LA 70114
504-364-4023

Algiers Community Health Clinic
4422 General Meyer Ave.
New Orleans, LA 70114
504-364-4066

Jefferson Community Health Centers, Inc.

4028 US Hwy 90 W
Avondale, LA 70094
504-436-2223

PATH Community Health Care Facilities - continued

Jefferson Community Health Centers, Inc. (continued)

1855 Ames Blvd.
Marrero, LA 70072
504-371- 8958

Medical Center of Louisiana at New Orleans

Hutchinson Clinic
1545 Tulane Ave.
New Orleans, LA 70112
504-903-2373

University Hospital
(West Campus)
2021 Perdido St.
New Orleans, LA 70112
504-903-3000

New Orleans Health Department

Healthcare for the Homeless Clinic
2222 Simon Bolivar Ave.
New Orleans, LA 70113
504-565-7283

Edna Pilsbury Health Clinic
2222 Simon Bolivar Ave.
New Orleans, LA 70113
504-565-7283

McDonogh 35 High School
1331 Kerlerec St.
New Orleans, LA 70116
504-942-3592

St. Charles Community Health Center

201 W. Esplanade, Suite 310
Kenner, LA 70065
504-464-8759

St. Thomas Community Health Center

1020 Saint Andrew St.
New Orleans, LA 70130
504-529-5558

Tulane Community Health Center at Covenant House

611 N. Rampart St.
New Orleans, LA 70112
504-584-1167

Tulane University Drop-In Center

611 N. Rampart St.
New Orleans, LA 70112
504-584-1112

LSU Health Sciences Center Adolescent School Health Initiative

New Orleans Science
& Math High School
5625 Loyola Ave.
New Orleans, LA 70115
504-324-7072

Eleanor McMain High School
5712 S. Claiborne Ave.
New Orleans, LA 70125
504-862-5117

COMMON GROUND HEALTH CLINIC

Founding Story

On September 5, 2005, in the immediate aftermath of Hurricane Katrina, Algiers residents Malik Rahim and Sharon Johnson founded the Common Ground Collective, dedicated to grassroots relief for flooded neighborhoods. Volunteers arrived from throughout the nation to supply and staff Common Ground's 24-hour First Aid Station. In its early days, Common Ground operated out of the Masjid Bilal, an Algiers mosque. Doctors, nurses, nurse practitioners, herbalists, body workers, counselors, pharmacists, acupuncturists, and physical therapists came from across the country to work with Common Ground as the First Aid Station developed into a free emergency-response health care clinic.

Today

In January 2006, Common Ground Health Clinic opened at its current location at 1400 Teche Street, a former corner store located across the street from its original home, the mosque. Shortly thereafter, it began operating four days a week.



Common Ground Health Clinic now serves approximately 200 patients per week free of charge. The top three health problems diagnosed at the clinic are hypertension, diabetes and stress — all chronic, poverty-related conditions. The majority of Common Ground's patients received care before the storm at Charity Hospital, and almost none have medical insurance. For many of these patients their experience with Common Ground is their first with a consistent primary care provider.

The mission of the clinic is to increase access to primary care services, thereby decreasing the reliance of New Orleans communities on emergency rooms and hospitals for chronic disease care. In addition, the clinic educates patients to care for themselves at home.



COMMON GROUND HEALTH CLINIC

Ravi Vadlamudi, MD
Medical Director
1400 Teche Street
New Orleans LA 70114
<http://cghc.org>



DAUGHTERS OF CHARITY SERVICES OF NEW ORLEANS



DAUGHTERS OF CHARITY SERVICES OF NEW ORLEANS

David Ward, MHA
President/CEO
111 N. Causeway Boulevard
Metairie, LA 70018
<http://thedcsno.org>

Founding Story

In 1997, the Daughters of Charity Services of New Orleans (DCSNO) was incorporated with the mission of improving access to primary preventive health care services for low income and uninsured persons. It is a ministry of the Roman Catholic Church and a member of Ascension Health, the nation's largest Catholic health system.

DCSNO and its community partners have served the poor of New Orleans through the Daughters of Charity Health Center at Carrollton, Health Professions Education Partnership, Neighborhood Health Partnership, Marillac Center for Community Health, and the Seton Resource Center for Child Development.

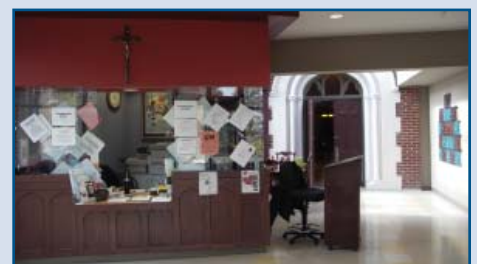
Before the hurricane, DCSNO provided health services in 20 schools, five shelters for homeless persons, and 11 neighborhood centers. In 2005, 124 medical,

pharmacy, nursing, social work, exercise physiology and other health-science students were trained at DCSNO sites.

Today

Many of DCSNO's clinical sites, including the Daughters of Charity Health Center at Carrollton, suffered significant flood damage as a result of Hurricane Katrina. Clinical services have been relocated to the Jefferson Parish Health Unit in Metairie, but DCSNO intends to move the operations back to the Carrollton neighborhood. DCSNO recently partnered with Catholic Charities and fellow non-profit health organization EXCELth Inc., to open a health clinic at St. Cecilia's, a renovated and deconsecrated church in the Bywater.

Through the St. Cecilia Health Center, DCSNO offers pharmacy, podiatry, dentistry, optometry, obstetrics and behavioral health care services to the hard-hit 9th Ward and Bywater areas. St. Cecilia's is also home to PACE, an Adult Day Health Care program with a "safe and welcoming environment" for impaired or disabled adults.



EXCELTH PRIMARY CARE NETWORK

Founding Story

EXCELth Inc. is a private, non-profit organization established in 1991 to create better and more integrated approaches to community-based, primary care services in New Orleans.

The EXCELth Inc. Primary Care Network consists of community-based, primary health care clinics operated by three entities: EXCELth Inc., Daughters of Charity Services of New Orleans and the New Orleans Health Department. These free-standing, ambulatory care facilities provide services directly or by referral.

The community health centers provide comprehensive, community-based, primary and preventive care. Patient care is multi-disciplinary, with clinical staffing that includes pediatricians, internists, obstetricians, gynecologists, psychiatrists, family practitioners, nurse practitioners, social workers, nurses, and outreach and eligibility workers.

By leveraging federal, state, and local government and private resources, EXCELth has provided care to over 17,000 patients, most of whom are uninsured. In-house, reduced-price pharmacy services and indigent patient assistance programs are also provided.

Today

Since Hurricane Katrina, services are provided in Orleans and East Baton Rouge Parishes. While EXCELth's New Orleans East clinic was destroyed by the flood, mobile health units and network clinics such as the Algiers Community Health Center, the Ida Hymel Clinic, and the Daughters of Charity St. Cecilia Health Center continue to serve New Orleans.

Plans to open additional clinics in damaged New Orleans communities are underway and, thanks to a \$1 million grant from the United Health Foundation, services at St. Cecilia's Health Center in Bywater will be expanded. In response to the health needs of Gulf Coast evacuees, EXCELth established a Family Health Center and Mobile Clinic in Baton Rouge, for which it received the Johnson & Johnson Community Healthcare Program 2006 Leadership Award.



EXCELTH PRIMARY CARE NETWORK

Michael Andry, MPA
CEO

1515 Poydras Street
Suite 1070
New Orleans, LA 70112



JEFFERSON COMMUNITY HEALTH CARE CENTERS, INC.



JEFFERSON COMMUNITY HEALTH CARE CENTERS, INC.

Carol Smith, RN
CEO
2439 Manhattan Blvd, Suite 306
Harvey, LA 70058
www.jchcc.com

Founding Story

Jefferson Community Health Care Centers Inc. (JCHCC), a Federally Qualified Health Center, is a nonprofit organization delivering primary and preventive health care to the poor, uninsured, and under-insured residents in and around Jefferson Parish. JCHCC was established in 2004, with its primary location in Avondale.

Today

Due to its location on the Westbank of Jefferson Parish, Jefferson CHC was one of a few clinics capable of reopening and operating after Hurricane Katrina.

While continuing to offer services from the state-of-the-art Avondale location, JCHCC expanded to include a satellite Urgent Care facility on the grounds of West Jefferson Hospital in Marrero.

JCHCC also broadened its service offerings to include nutrition instruction, Medicaid and LaChip enrollment, medication assistance, laboratory services, podiatry services and mental health.

The JCHCC recently expanded services to the Jefferson Parish Health Unit – Westbank Location at 1855 Ames Blvd., replacing the Urgent Care facility. In the winter of 2006-2007, dental health services were added, and JCHCC has applied to offer a Women, Infants and Children (WIC) program.



MEDICAL CENTER OF LOUISIANA AT NEW ORLEANS

Founding Story

The Medical Center of Louisiana at New Orleans (MCLNO) includes two hospital campuses located a half mile apart in downtown New Orleans: The historic Charity Hospital on Tulane Avenue and University Hospital on Perdido Street. Charity and University Hospitals have served the people of New Orleans and area residents since 1736 and 1991 respectively. Before Katrina, many uninsured families depended upon both facilities for emergency, primary and preventive medical services.

Charity Hospital has a reputation throughout the region for providing the best trauma care, while the Medical Center is known as a safe haven for the uninsured and underserved.

Today

Hurricane Katrina inflicted irreparable damage on Charity Hospital and the facility was closed, but University Hospital reopened in November, 2006. Nevertheless, even prior to Katrina, the plan for MCLNO ambulatory services was to develop primary care clinics within local communities, in order to give the patients access to routine care in their own neighborhoods.

Immediately after the storm, MCLNO's administration worked with FEMA and the LSU Health Care Services Division to enact a plan for restoration of medical

services in New Orleans via temporary facilities in double-wide trailers. This allowed for the positioning of services within a rapidly shifting and resettling patient population. At least four sites are planned for Orleans Parish, likely in association with school-based clinics that could serve the community during non-school clinic hours. Two other sites will likely be located in Jefferson Parish. Thanks to a \$1 million grant from AstraZeneca Pharmaceuticals, these primary care clinics will include "telemedicine" capabilities that will allow specialty care to be delivered remotely from the downtown campus to patients in their communities.

In the interim, to serve trauma patients who would have been treated at Charity Hospital, MCLNO opened a trauma unit in Harahan and an emergency unit in the former Lord & Taylor store in downtown New Orleans.



MEDICAL CENTER OF LOUISIANA AT NEW ORLEANS

Dwayne Thomas, MD
CEO
1541 Tulane Avenue
New Orleans, LA 70112
www.mclno.org



NEW ORLEANS HEALTH DEPARTMENT



CITY OF NEW ORLEANS
HEALTH DEPARTMENT

NEW ORLEANS HEALTH DEPARTMENT

Kevin Stephens, MD, JD
Director
1300 Perdido Street
Room 8E18
New Orleans, LA 70112
www.cityofno.com

Founding Story

The New Orleans Health Department is one of the thirteen charter-mandated departments of New Orleans city government. Dating to 1853, it is the oldest health department in the South and among the oldest public health agencies in the country.

As the official health agency for Orleans Parish, it is the mission of the health department to protect, maintain and enhance the health status of the city's citizens, visitors, and communities, through disease mapping, prevention and management. The presence of city-operated clinics has, for decades, addressed the critical gap in access to affordable healthcare in underserved neighborhoods.

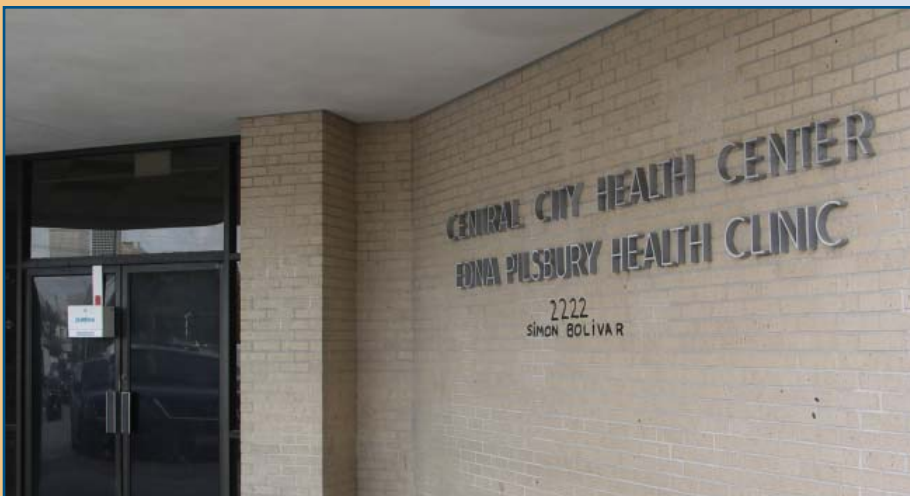
Today

The usual delivery of care was interrupted in August 2005, as Hurricane Katrina destroyed or damaged more than half of the

city's clinics. However, the Ida Hymel and Algiers clinics, located on the Westbank of Orleans Parish, as well as the Edna Pilsbury clinic in Central City, managed to escape the flooding and were reopened shortly after the storm. Full comprehensive services, including mental health, are available to new and returning patients.

In early February, 2005, the New Orleans Health Department, along with the Morehouse School of Medicine, hosted a week-long, full-service Health Fair at the Audubon Zoo. New Orleans residents received free medical, dental, and eye-care services that included complete examinations and health assessments; general medical and surgical care; cancer, blood pressure and diabetes screenings; and eye examinations, with glasses and contacts delivered on the spot. Participants were also given the opportunity to create an electronic personal and portable healthcare record. These services were made available through Remote Area Medical (RAM), an international mobile relief force of volunteer doctors, nurses and technicians.

In addition, the Department of Education, the Department of Health and Hospitals and the Orleans Parish School Board are planning to open 20 clinics at New Orleans public schools by 2009. The New Orleans Health Department will provide medical staff and services to these clinics.



ST. CHARLES COMMUNITY HEALTH CENTER

Founding Story

When St. Charles Community Health Center was founded in 2002, it was made up of only one doctor, located in a small, dated facility. However, the needs of the community quickly lead the center's growth and expansion.

Because a third of St. Charles Parish's population lives at 200 percent or more below the federal poverty line, there was an urgent need for healthcare services targeting these residents. In response to this need, the St. Charles center evolved into a Federally Qualified Health Center that serves approximately 10,000 people. In addition, the center moved into a modern, 15,500 square-foot facility that houses 17 physicians, as well as other licensed healthcare providers.

Today

Only days after Hurricane Katrina hit the coast, the center was reopened as a regional Urgent Care facility and faced a 500 percent increase in patient load. More than a year after the storm, the patient population relying on the St. Charles Community Health Center remains twice its pre-storm levels, reflecting the damage done to the surrounding medical infrastructure.

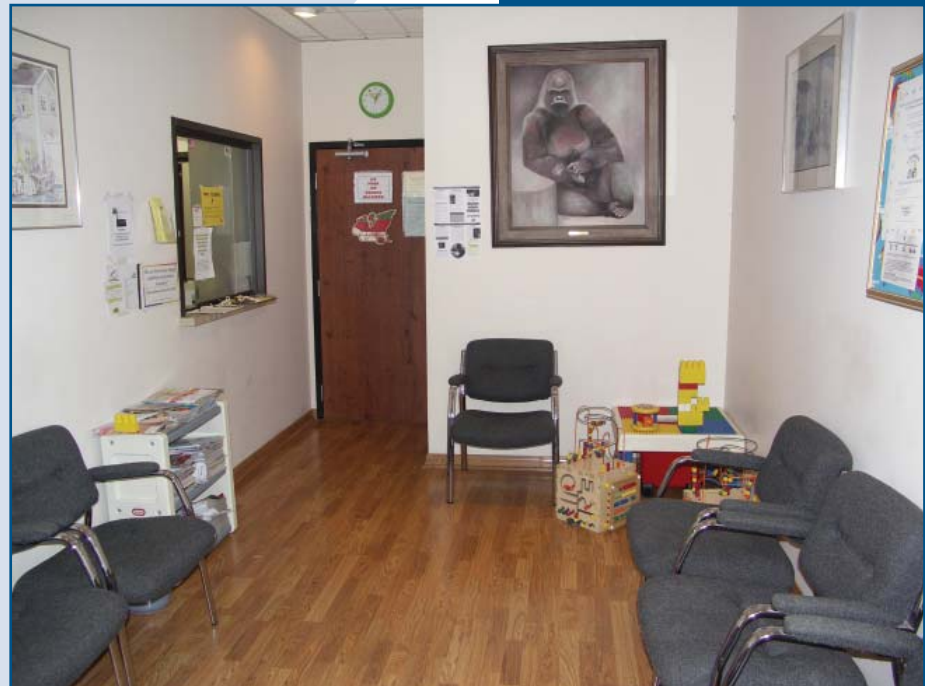
In response to the emerging needs of the community post-Katrina, the center has:

- Secured essential medical supplies and medicines
- Increased behavioral health services
- Established a second facility in the city of Kenner in order to better serve the increase in need population of the area
- Expanded in new areas of service, such as dentistry and innovative group obstetric care



ST. CHARLES COMMUNITY HEALTH CENTER

Mark Keiser, MHA
CEO/Exec. Director
201 W. Esplanade, Suite 310
Kenner, LA 70065
504-464-8759
www.stcchc.org



ST. THOMAS COMMUNITY HEALTH CENTER



ST. THOMAS COMMUNITY HEALTH CENTER

Donald T. Erwin, MD
President and CEO
1020 St. Andrew Street
New Orleans, LA 70130
<http://stthomaschc.org>

Founding Story

In 1987, Sister Marion Puerzer and Sister Jane Meurschel of the Sisters of Charity collaborated with residents of the St. Thomas Housing Development to found the St. Thomas Health Services Clinic. The original clinic was located in the St. Thomas Housing Development, then the largest public housing complex in the United States. The clinic, now known as the St. Thomas Community Health Center, moved to its present location at 1020 St. Andrew Street in 1991.

For almost 20 years, the St. Thomas Community Health Center has provided health care to residents, regardless of insurance, for only a \$20 payment. The clinic has also been a site for the training of medical and pharmacy students, internal medicine and

family practice residents, and nurse practitioners from LSU, Ochsner, Xavier and Tulane.

Today

Clinical operations at St. Thomas were completely disrupted by Hurricane Katrina. With its 25 full-time staff members scattered across the country, the clinic was closed. However, thanks to the generosity of public and private donations, a new corporation, St. Thomas Community Health Center, was formed and the clinic was able to reopen in October of 2005.

St. Thomas Community Health Center now has greater capacity and offers comprehensive adult primary and preventive care, selected specialty care, and full-time pediatric services.



TULANE UNIVERSITY COMMUNITY HEALTH CENTER

Founding Story

In the weeks after Hurricane Katrina, a group of Tulane physicians came together to deliver care to the remaining population of New Orleans. With much of the healthcare infrastructure of the city devastated, these physicians practiced wherever they were needed - in mobile vans, shelters, police precincts, and tents.

With nothing more than a willing doctor, a card table, a box of supplies, and an ice chest to keep tetanus vaccines cold, a permanent site was established on September 12, 2005, at Covenant House, a New Orleans homeless shelter. One of the six permanent sites created after the storm, the Tulane University Community Health Center at Covenant House has cared for nearly 7,800 patients across a broad demographic of chronically ill, disabled and homeless people and low-income wage earners.

Today

Working in the absence of traditional structures and models of care delivery fostered the development of decentralized primary care, preventive services and health promotion focused on holistic patient needs. Building on this vision of healthcare that was wrought by necessity, a long-term partnership between Covenant House, Johnson & Johnson and Tulane University

has been formed to sustain the clinic operations and support the development of a model health center design. The partners envision providing healthcare in a multi-purpose community center, integrated with daycare, education and other services targeting the broad needs of the neighborhood. When a patient's medical needs exceed the capacity of community-based services, the clinics would serve as points of entry into the broader health system.

Tulane University Community Health Center at Covenant House is dedicated to improving the health of New Orleans residents by providing continuous high-quality, holistic, accessible, community-based care. Services currently include adult primary care, reproductive health, mental health counseling and behavioral health services, geriatric care, and health education. Walk-in patients are welcome, and each patient can be assigned a primary physician to lead their "medical home" team.



TULANE UNIVERSITY COMMUNITY HEALTH CENTER AT COVENANT HOUSE

Karen DeSalvo, MD, MPH, MSc
Executive Director
611 North Rampart Street
New Orleans, LA 70112
www.tucovenanthealthcenter.org



TULANE UNIVERSITY DROP-IN CENTER



TULANE UNIVERSITY DROP-IN CENTER

Sue Abdalian, MD
Medical Director
611 N. Rampart Street
New Orleans, LA 70116
www.som.tulane.edu/departments/pediatrics/index.html

Founding Story

More than a decade ago Sue Ellen Abdalian, associate professor of pediatrics and adolescent medicine at Tulane University School of Medicine, founded the Adolescent Drop-In Center to provide street outreach, comprehensive healthcare and support to urban homeless youth. The Drop-In Center, located at 1434 N. Rampart Street in New Orleans, grew over the years into an integrated program offering HIV prevention and education, reproductive care, mental health, substance abuse counseling and treatment, and clinical medical services. The second floor of the center provided homeless youth a safe place off of the streets during the day, as well as showers, restrooms, a washer/dryer, snacks, and other services. All of these efforts were designed to meet the goal of moving clients toward self sufficiency and permanent housing.

Today

The Drop-In Center and its clinic were devastated when Hurricane Katrina struck. The staff scrambled to resume and even expand services to meet the needs of youth in post-Katrina New Orleans. Initially, the staff saw clients in a mobile medical unit, along with the staff of the New Orleans Health Care for the Homeless Program. In November, Covenant House New Orleans generously allowed Drop-In staff to operate at 611 N. Rampart, providing medical care to the residents of Covenant House as well as other community youth. Over time, pediatric services expanded to five mornings a week, as need increased and as Tulane pediatricians and pediatric residents returned to the city. The morning clinic has become a "continuity of care clinic" for the Tulane pediatric residents and faculty and provides a medical home for many pediatric clients. An afternoon clinic is reserved for clients who do not see themselves as pediatric patients, but are not yet adults.

Space at Covenant House is limited, so mental health and behavioral health services are offered at 1428 N. Rampart St. Reproductive health services are provided on Monday and Wednesday evenings and Saturday mornings in the New Orleans Children's Health Program Mobile Medical Unit.



LSU HEALTH SCIENCES CENTER ADOLESCENT SCHOOL HEALTH INITIATIVE

Founding Story

In 1991, the Louisiana legislature authorized the creation of the Adolescent School Health Initiative (ASHI) through the Office of Public Health of the Department of Health and Hospitals. ASHI was charged with developing a network of health centers that are integrated in school settings and offer comprehensive primary and preventive care to students. The vision for these centers was to create a sustainable healthy environment for youth, faculty, staff, families, and the community through the provision of comprehensive and expert medical and behavioral health-care, strategic health program planning, and school/community involvement and direction. Five such School-Based Health Centers were located in Orleans Parish prior to Hurricane Katrina.

Today

All five New Orleans centers, along with much of the area's healthcare infrastructure, were destroyed during hurricanes Katrina and Rita. In response, OPH/ASHI established health centers at McMain Magnet School and the New Orleans Science and Math School. The centers are partially supported by a grant from the Kellogg Foundation, and School Health Connection, operated through the Louisiana Public Health Institute.

The two centers are currently operating despite space constraints. The center at Science and Math has become a nexus for health in the school, occupying space in more than two classrooms, with areas for administration, triage, and clinical care, including counseling and education. The center at McMain High School shares space with the school nurse's office. The Science and Math center will soon occupy a renovated, freestanding building on the school campus. Meanwhile, the McMain Center is awaiting an approved Modular Health Unit.

In a relatively short time, and under significant pressures, these centers have provided patient care and updated immunizations for several hundred students and collaborated with School Health Connection partners to provide vision screenings, prescriptions, and glasses to all students in need.



LSU Health Sciences Center Adolescent School Health Initiative

Ryan Pasternak, MD, MPH
Director
Adolescent Medicine Program

Science and Math
Charter High School
(Former Henry W. Allen
Elementary School)
5625 Loyola Avenue
New Orleans, LA, 70125

McMain High School
5721 S. Claiborne Ave.
New Orleans, LA 70125



PATH Governance, Supporters and Staff

PATH IS GUIDED BY ITS GOVERNING COUNCIL

Elmore Rigamer, MD, MPA

Catholic Charities, Archdiocese of New Orleans

Sister Anthony Barczykowski, DC

Office of Community Service, Archdiocese of New Orleans

Cathi Fontenot, MD

Medical Center of Louisiana at New Orleans (MCLNO)

Dave Ward, MHA

Daughters of Charity Health Services

Michael Andry, MPA

EXCELth Inc.

Avis Gray, RN

Region I Office of Public Health

Kevin Stephens, MD, JD

City of New Orleans Health Department

Robert Marier, MD, MHA

Louisiana State Board of Medical Examiners

THE PARTNERSHIP IS VERY GRATEFUL TO ITS SUPPORTERS

Ascension Health

Health Resources and Services Administration

CHRISTUS Health

Franciscan Missionaries of Our Lady Health System

Lloyd A. Fry Foundation

Louisiana Department of Health and Hospitals

Sisters of Mercy Health System

LPHI STAFF SUPPORTING PATH INITIATIVES

Clayton Williams, MPH, Director

Robert Post, MD, Medical Director

Maria Ludwick, MPH, Clinical Programs Manager

Susan Bergson, MPH, Program Manager

Patrice Williams, MSHCM, Program Manager

Eric Baumgartner, MD, MPH

Information Technology Group

Communications Team

Evaluation & Research Team

and many Invaluable Interns

Learn more about PATH. Visit: www.pathla.org





CONTACT PATH:

1515 Poydras Street, Suite 1200
New Orleans, Louisiana 70112
Telephone: 504.301.9800
Fax: 504.301.9801
E-mail: contact@pathla.org
Web: www.pathla.org

